

What is CBCT?

A Cone Beam CT (CBCT) scan illustrates the actual make-up of the bone, provides three-dimensional and cross-sectional views of the anatomy.

As a result, the CBCT technology provides a lot more information and detail than conventional x-rays.

This helps your clinician to make a more accurate diagnosis and thorough treatment plan.

How much will it cost?

Your referring clinician will discuss pricing with you prior to your scan as this will be determined by the complexity of your treatment plan. We accept most UK credit and debit cards and cash.



Insurance company information

Cavendish Imaging is registered with most UK insurance companies.

If your insurance covers the whole examination, you will not need to pay anything on the day of your visit. We will claim these costs from your insurance directly.

You just need to bring your insurance membership and authorisation number. We will do the rest!

Radiation dose information

μSv (microsievert) is the scientific unit used for measuring the effect of radiation on our health.



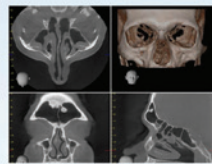
The average radiation a UK citizen receives in a year from all sources is

2200 μSv



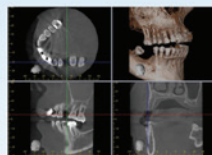
A flight from New York to Tokyo is approximately

150 μSv



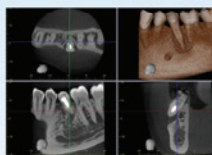
This Cavendish Imaging CBCT of the sinuses was approximately

150 μSv



This Cavendish Imaging CBCT of both jaws was less than

100 μSv



This Cavendish Imaging CBCT of 1 to 3 teeth was less than

40 μSv



Eating one average-sized banana is equivalent to

0.1 μSv

Our radiographers work closely with our referring clinicians to optimise your imaging protocol. This is to maximise the benefits achieved by using CBCT and outweigh any small risk involved.

What happens step-by-step

Your clinician refers you to us. Please call us on 020 3115 1113 to make an appointment.



Expect to be on the premises for approximately 30 minutes. Upon arrival we will ask you to complete the relevant forms concerning your visit.



Our Cavendish Imaging radiographer will take you through for your scan, explaining the procedure before each stage.



The scan itself is non-invasive, totally painless and lasts seconds. You will need to remain as still as possible during the scan.



The radiographer will check your scan and notify your clinician.



If paying on the day, please settle with your radiographer and kindly fill out a customer satisfaction form.